



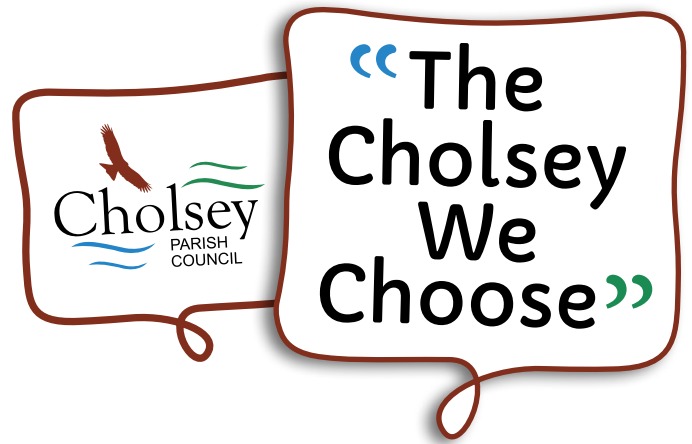
“The  
Cholsey  
We  
Choose”

**CHOLSEY PARISH COUNCIL**  
Strategic Plan 2024-2029



# OUR PURPOSE

The purpose of the Cholsey Parish Council 5-year plan is to improve the quality of life and the local environment for the residents of Cholsey.



This Parish Council plan has been based on community conversations which took place between June (the Annual Community meeting) and September 2023. The purpose of this document is to set out goals that will guide the Council's work over the next 5 years.

# OUR VISION

## A healthy Cholsey

A safe and healthy place to live, learn and work for all residents, regardless of age or background.



## A Cholsey with thriving communities

Strong, active, inclusive and caring communities.



## A resilient Cholsey

Where people are informed, resourced and active in shaping their own lives and the quality of their environment.



# OUR COMMITMENT

In delivering this plan Cholsey Parish Council will:

- ✓ Work for the benefit of Cholsey residents
- ✓ Act with integrity and accountability
- ✓ Be open, honest and transparent in all our interactions with the community
- ✓ Put sustainability at the heart of decisions – balancing the needs of the present without compromising future generations
- ✓ Communicate and engage with the community in a variety of ways
- ✓ Be clear about the change we can and cannot effect

## OUR GOALS

We have defined three overall goals, based on input from the community, to guide our work. For each of these goals we have given examples of our approach. We will next develop a detailed Action Plan showing how we will deliver them in 2024/2025 and beyond.

### GOAL 1

To protect our environment by taking action against climate change and biodiversity loss.



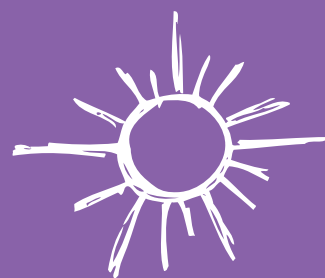
### GOAL 2

To support and improve the health, wellbeing and safety of Cholsey residents.



### GOAL 3

To help build a more resilient community.





# GOAL 1

To protect our environment by taking action against climate change and biodiversity loss.



To protect our environment for this and future generations, we need to act to tackle the linked challenges of climate change and biodiversity loss.

## 1a/ Increase active travel

Work to provide safer walking routes to schools

Work to provide safer cycling routes to Wallingford

Work to make pavements and footpaths more accessible

Increase secure cycle parking

Increase use of public transport

Campaign to improve the accessibility and condition of Cholsey Station

## 1b/ Save energy and reduce use of fossil fuels

Promote community renewable energy projects

Promote community retrofitting projects

Promote domestic energy-saving initiatives

Investigate provision of Electric Vehicle charging infrastructure

Reduce the Parish Council's carbon emissions

## 1c/ Increase biodiversity

Protect and enhance spaces for nature

Plant trees and pollinator-friendly plants

Implement Recreation ground management plan for people and biodiversity

Review verge and hedge management plans

Explore opportunities in the surrounding countryside to secure land for habitat provision, sustainable community amenities and local food growing

## 1d/ Reduce waste

Promote food sharing and composting

Promote upcycling, re-using, and waste reduction

Promote strategies for water security



# GOAL 2

To support and improve the health, wellbeing and safety of Cholsey residents.



We will focus on the three elements of this goal to help our community stay safe, healthy and active.

## 2a/ Improve health

---

Work to establish local health and wellbeing services

---

Reduce pollution and improve road safety by reducing traffic in the centre of the village

---

Increase exercise opportunities e.g. Green Gym, sports clubs

---

Improve access to Council-managed green spaces

---

Support gardening, vegetable- and fruit-growing projects

---

Promote the availability of locally grown, healthy food

## 2b/ Increase wellbeing

---

Improve play and leisure facilities at the recreation ground, and in other areas of the village

---

Support activities for younger residents

---

Support community activities that reduce isolation and increase inclusion

---

Support local entertainment e.g. music festivals, community events

## 2c/ Increase safety

---

Consult on adoption of 20-mph community speed limit

---

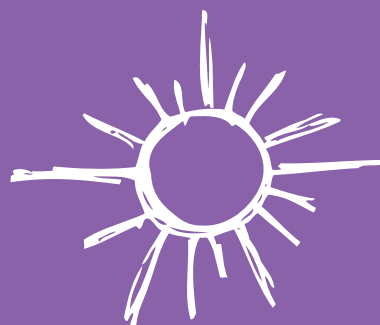
Work to address parking issues

---

Adopt safe road crossings

# GOAL 3

## To help build a more resilient community.



As a community, Cholsey has been proactive in its work to develop more resilience. Today we continue to face a number of complex challenges from pandemics to cost of living rise to extreme weather events. We will help strengthen the ability of our community to meet the challenges now and in the future.

### **3a/ Develop robust community plans**

---

Maintain an up-to-date Cholsey Neighbourhood Plan based on the wellbeing of present and future generations

---

Produce a Community Emergency Plan on behalf of Cholsey

---

Assess risks and implement actions to help mitigate the impact of extreme weather events

### **3b/ Maintain strong, inclusive, caring communities**

---

Develop a new residents' welcome pack

---

Develop resources that will help residents share the knowledge and skills they hold

---

Support the development of community growing initiatives; encourage allotment communities

---

Support the sharing of community resources

---

Support community volunteer activities

---

Promote activities that focus on community integration and multigenerational involvement

---

Actively source goods and services from local businesses



# CONCLUSION

This is an evolving document which will be reviewed regularly, against which all Cholsey Parish Council discussions and decisions will be considered and made. It will be used to develop a detailed Action Plan showing how we will deliver our strategic goals.

We want to work with you to make a positive difference to our unique community. We will continue to reach out to update you on progress and listen to feedback.

Email: [hello@cholseyparishcouncil.gov.uk](mailto:hello@cholseyparishcouncil.gov.uk)

Phone: **01491 652255**



For further information:

[cholseyparishcouncil.gov.uk](http://cholseyparishcouncil.gov.uk)